



SINCE 1951

ONPA

The Ohio News Photographers Association, serving Ohio's professional and student photojournalists

73rd Annual Contest Rules

Still Image Division



Photo by Adam Cairns, George A. Smallsreed, Jr. Photographer of the Year (Large Market)

Eligibility

- Any Life, Professional or Student ONPA member who has paid dues for the contest year is eligible to enter. Members may only submit work while based in Ohio or while a student enrolled at a university in Ohio. Any eligibility issues are subject to review by the Board.
- Only still images created between January 1, 2023 and December 31, 2023 are eligible. Photographs in a picture story entry taken over a period of time that begins in the year preceding the eligibility date, but extends into the period of eligibility may be entered as long as they have not been entered in the contest in any category before or been published in any fashion prior to January 1, 2023.



SINCE 1951

ONPA

The Ohio News Photographers Association, serving Ohio's professional and student photojournalists

Entries

- There is a \$25 fee per person entering. Fee waived for student members or for entrants in the Multimedia and/or Television divisions.
- All still image entries must be submitted as digital JPG files.
- Unpublished photographs *are* eligible for entry.
- With the exception of illustration categories, there shall be *no digital alteration* of any entry.
- No more than 15 entries from any one member will be accepted.
- Individual picture stories must contain at least 3 images, but shall not exceed 12 images.
- Only one image per file is allowed. Diptychs, triptychs, etc., are ineligible for entry. Multiple exposure images are eligible as long as the multiple exposure was made in-camera.
- Ohio Understanding, POY, Sports POY, and Product Illustration entries do not count toward the individual limits of 15 entries.
- A first place award will be given in each category with at least two entries. A first place award in categories with only one entry is at the judges' discretion. Awards beyond first place in categories with more than two entries are at the judges' discretion.

Deadline

- All entries must be uploaded by 11:59 p.m., Sunday, February 18, 2024.
- Additionally, the entry fee must be received via PayPal by 11:59 p.m., Sunday, February 18, 2024.
- Your entry is ineligible until payment is received.

Portfolio Categories

Portfolios are judged on the basis of photographic excellence, subject matter, versatility, technical quality and originality. An image may only appear once in your portfolio: If an image is included in a picture story in your portfolio; it cannot also be entered as a single image in your portfolio. Portfolio images will not be broken down and automatically entered into individual categories. If the portfolio contains an image or story which the photographer wants to enter into individual categories, separate images must be prepared and entered. Team entries are not eligible in an individual photographer's portfolio. Entry limits are detailed below.

GEORGE SMALLSREED JR. PHOTOGRAPHER OF THE YEAR (POYO or POYU)

- This competition is split into large (POYO) and small (POYU) market divisions based on under/over 60,000 on the largest circulation day.
- Portfolios must contain a news picture, a sports picture, a picture story and pictures from at least two other categories.
- Portfolios are limited to 20 entries. Any picture story counts as an entry. Total portfolio image limit is 40 images. Any individual story is also limited to 12 images.

RON KUNTZ SPORTS PHOTOGRAPHER OF THE YEAR (SPOY)

- Portfolios must contain a sports action picture and a sports feature picture. Portfolios may include an optional sports picture story.
- Portfolios are limited to 15 entries. Any sports picture story counts as an entry. Total portfolio image limit is 30 images. Any story is also limited to 12 images.

CHUCK SCOTT COLLEGE PHOTOGRAPHER OF THE YEAR (CPOY)

- The College POY title will be awarded to the successful candidate based on portfolio.
- Portfolio must include at least one news picture, one picture story and pictures from at least two other categories.
- Portfolios are limited to 15 entries. Any picture story counts as an entry. Total portfolio image limit is 30 images. Any story is also limited to 12 images..



SINCE 1951

ONPA

The Ohio News Photographers Association, serving Ohio's professional and student photojournalists

Picture Story Categories

A brief overview should precede the caption on the first image of all picture story entries. Unless otherwise noted in the category description, all Picture Story entries must include at least three images, but are limited to a maximum of 12.

JAMES R. GORDON OHIO UNDERSTANDING AWARD (OUA)

- This category recognizes in-depth projects that celebrate or illuminate issues specific to the state of Ohio.
- Accompanying the entry must be a statement no longer than 300 words explaining the project in the caption field of the first image.
- The entry may be from an individual or a team effort from one publication or school.
- Single photos from the entry can also be entered in the still contest as a separate entry.
- There is no limit to the number of images for stories in this category.

FPS – FEATURE PICTURE STORY: A multiple-picture entry of a story, series or sequence on a general human-interest subject.

NPS – NEWS PICTURE STORY: A multiple-picture entry of a story, series or sequence of a spot or general news event.

SPS – SPORTS PICTURE STORY: A multiple-picture entry of a story, series or sequence on a sports event or sports-related subject.

Single Image Categories

FEA – Feature: A found situation with strong human interest - a fresh view of an everyday scene.

GNN – General News: A picture of a scheduled political, social or cultural event for which advance planning was possible. An assigned and/or scheduled news events. Example: demonstration, funerals, trials and promotional events.

PIC – Pictorial: A picture that uses the aesthetic qualities of the subject with emphasis on composition.

ILL – Illustration: A photograph conceived to illustrate a particular idea or editorial concept or a photograph illustrating any product, including food or clothing. (Limit 5 per photographer.)

PPY – Portrait Personality: A picture of a person that reveals the essence of the subject's character.

SPA – Sports Action: A photograph that increases understanding and appreciation for individual and team sports. Photographs of competitive events, not practice or informal play. Emphasis is on athletics and the commitment it takes to compete.

SPF – Sports Feature: An unposed sports-related photo that celebrates the role athletics plays in the lives of amateur and/or professional athletes and fans.

SPN – Spot News: A picture of an unscheduled event for which no advance planning was possible taken in the course of daily coverage. Examples: fires, accidents and natural disasters.

File Preparation – singles

- All images should be submitted as .jpg, sized to 10 inches on the longest side with a resolution at 200 ppi. Individual image file size should be between 1-2 MB.
- Each image's file name should be as follows: Category code (located next to the category description on the previous page), underscore, personal code (your initials followed by the first two letters of the city where you work), underscore, short slug, ending with .jpg All file names are to be in lower case. For example, an image in the Portrait-Personality category by Joe Q. Photographer of Columbus should read: ppy_jqpc_dunk.jpg.
- All images in any picture story category are to be placed into a folder. This folder is to be named using the proper category code, underscore, photographer's code, underscore, followed by a slug for the story. Example: fps_jqsc_sisters would be the folder name for a Feature Picture Story Entry entered by Joe Q. Photographer working in Columbus with a slug of sisters. The files within that folder should all have the same slug. Only the two digit number following the slug should change. The numbers will dictate in which order the files will be viewed within the story.



SINCE 1951

ONPA

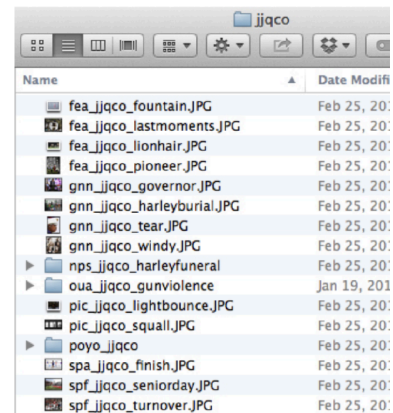
The Ohio News Photographers Association, serving Ohio's professional and student photojournalists

- *For example:* fps_jqpco_sisters01.jpg, fps_jqpco_sisters02.jpg, fps_jqpco_sisters03.jpg, so on and so forth.

An Example Entry —>

In one folder named with your personal code, include:

- your single image entries, **NOT** in individual folders
- your picture story entries and/or your portfolio entries, in **properly labeled individual folders**.



File Preparation – other

Images in a Portfolio category should follow the naming conventions described above, but image files should *start* with a number preceding the filename so they will be viewed by the judges in the order you have assigned.

- All images must have complete caption information and metadata. Caption information must be entered in the individually appropriate fields. Images that do not have the caption information entered in the proper fields will be disqualified. Edit captions so they are brief but comprehensive.
- These metadata fields should be completed as follows:

Caption: A brief description of the photo which *should not* contain your name or publication's name.

Headline: Short name or title you give to your entry

Supp Cat 1: Category Code (listed next to the category title on the next page)

City: City where image was taken

State: State where image was taken

Country: Country where photo was taken

Date: Date the photo was taken

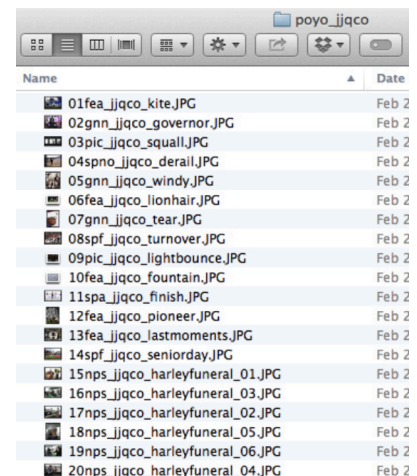
Byline or Author: Your name

Credit: Newspaper, School or copyright holder's name or specify 'Freelance'

An Example Entry —>

In the portfolio example screenshot (at right), the files should start with a number preceding the filename so they will be viewed by the judges in the order you wish.

Although this is a portfolio category, the labeling is such that we can determine if you meet entry requirements.





SINCE 1951

ONPA

The Ohio News Photographers Association, serving Ohio's professional and student photojournalists

Submitting Your Entry

Complete the entry form included with these rules and also available at onpa.org/rules/ONPA_annual_still_entry.pdf. Save it with a file name of stillentry_your personal code.PDF. (Example: stillentry_jqsco.PDF)

- Make one zip file consisting of your folder and your PDF by selecting both, then right-clicking, and choosing “Compress” on a Mac or right-clicking and choosing “Send To -> Compressed” on a PC.
- Go to <http://onpa.org/contest.htm> and enter the required form fields.
- Upload your zip file then click Submit - after your file uploads, you will see a confirmation message that includes a link to the ONPA PayPal page. You will also get an email confirmation.
- Make your contest/dues payment online (using PayPal at <http://onpa.org/joinonpa.htm>) when you upload your entry, OR if paying by check, send a check payable to: ONPA, Inc. to: Kim Barth, 681 Morningview Ave., Akron, 44305.

IF YOU'RE NOT SURE OF ANY RULE OR PREPARATION GUIDELINE CONTACT:

- ONPA President Andrew Dolph (onpaprez@gmail.com)
- ONPA Vice President and contest chairman Sam Greene (onpastillvp@gmail.com)



SINCE 1951

ONPA

The Ohio News Photographers Association, serving Ohio's professional and student photojournalists

Entry Form

Still Image Division

Should an entry submitted by me be declared a winner in any category, I authorize the Ohio News Photographers Association to ultimately contribute this item on my behalf to be archived in the ONPA contest collection at the library of Communications and Graphic Arts at The Ohio State University. Any pictures that are entered may be reproduced in connection with publicizing the competition. This release, however, is not an assignment of copyright.

Signature:

Date:

Personal Code (initials and first two letters of work city):

Name:

Employer/School, and expected grad date:

Street Address:

City, State, Zip:

Phone:

Email:

FEES: *Make checks payable to ONPA, Inc

- Contest Fee and annual membership renewal \$50 (\$10 discount)
- Student Contest entry FREE (Student membership is \$25 flat rate until graduation)
- Contest only \$25 (for Life members or those who have already paid annual dues)
- Check here if using PayPal

THESE SIX CATEGORIES *DO NOT COUNT* AGAINST 15 ENTRY LIMIT. PLEASE CHECK IF ENTERING:

***Only one:**

- POY Large
- POY Small

***Any/all:**

- College POY
- Ohio Understanding
- Sports POY
- Illustration

PLEASE ENTER THE NUMBER OF ENTRIES YOU HAVE FOR EACH CATEGORY (LIMIT 15):

FEA ___ NPS ___ SPF ___ FPS ___ PIC ___ SPN ___ GNN ___ PPY ___ SPS ___ ILL ___ SPA ___ **TOTAL=** _____

TOTAL NUMBER OF ENTRIES FOR THIS PHOTOGRAPHER (LIMIT 15) _____

TOTAL NUMBER OF IMAGES CONTAINED IN ENTRY FOLDER FOR ALL CATEGORIES _____